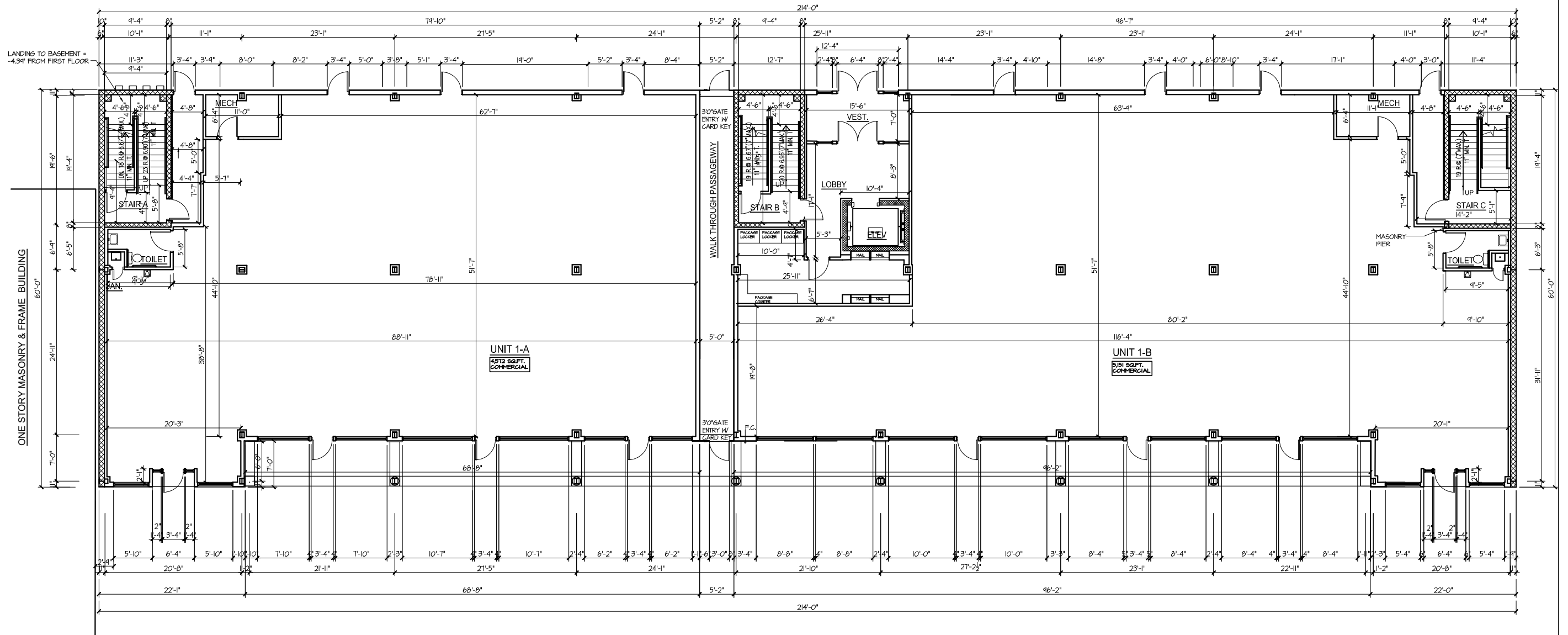


NOTE: FLOOR TO FLOOR
HEIGHT IS 12'-6" TO SECOND
FLOOR & 10'-6" TO
BASEMENT

NOTE: FLOOR TO FLOOR
HEIGHT IS 11'-7" & 11'-6" TO
BASEMENT

NOTE: FLOOR TO FLOOR
HEIGHT IS 11'-1"



ONE STORY MASONRY & FRAME BUILDING

TWO STORY MASONRY & FRAME BUILDING